

Automatic Headlight Tester

VH-1000



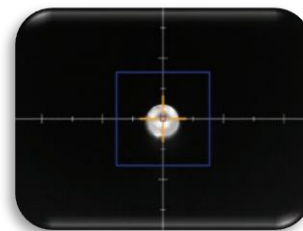
Product Features

Fully digital computerized controlled CMOS Head-light Beam Tester, with fully automated vertical and horizontal movements, with automated searching of the hotspot of the beam.

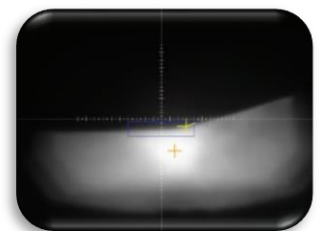
- Auto tracking image processing
- Dual cameras
- Half-mirror type(structure without distortion)
- High resolution (5 mega pixels)
- Available Modern headlamp HID, LED and Z-beam
- Low beam
- Support for various inputs and outputs (joystick, safety sensor, HDMI output)
- TCP/IP supports sending image
- Precisely using image zoom function
- Warning light and alarm
- Emergency stop switch
- User friendly PC interface
- LAN communication(optional)
- Auto height measurement module(optional)

Technical Specifications

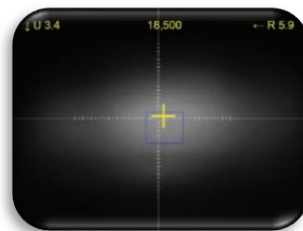
Description	Automatic Headlight Tester
Model	VH-1000
Measuring method	CMOS camera (concentration method)
Measuring range	Low beam, High beam
Light intensity	0-120,000 cd
Measurement range up	0-350mm/10m(0-2°)
Measurement range down	0-525mm/10m(0-3°)
Measurement range left	0-525mm/10m(0-3°)
Measurement range right	0-525mm/10m(0-3°)
Measurement height	400-1400 mm
Measurement distance	1 m
Camera pixel	5 mega pixels
Tracking	Automatic tracking
Display	1280x960 TFT LCD panel
Communication	RS232, TCP/IP
Dimensions	600(W) x 550(L) x 1,700(H) mm
Weight	100kg
Options	LAN communication, Auto height measurement module



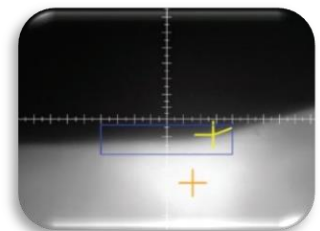
Front screen



Low beam



High beam



Low beam zoom

Technical specifications are subject to changes without notice.



Made in Korea

VISKOR CO., LTD.

Address: #617, 1142, BEOMAN-RO, GEUMCHEON-GU, SEOUL, 08595, KOREA

T. +82 2 6959 0634 F. +82 2 6959 0635 E-mail: viskor@viskorea.com www.viskorea.com