



HEADLIGHT TESTERS



VISKOR

CMOS CAMERA HEADLIGHT TESTER

VHE-8000



Product Features

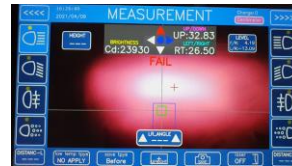
With new technology of CMOS machine vision camera and high-speed DSP (digital signal processor), all parameters of high-beam and low-beam are tested accurately.

With strong software functions and LCD display, inspection, calibration and adjustment can be completed quickly.

Using technology of light image alignment, external interference can be eliminated, accurate and fast follow-light aiming is ensured, high-beam / low-beam inspection takes only 40 seconds.

It is especially suitable for inspection stations for testing two headlights synchronously, efficiency can be improved, two-headlight synchronous inspection takes very quickly. Adopting frequency conversion driving, horizontal movement is steady and reliable.

Equipped with multi inspection mode settings and stand-alone. With function of online adjustment and inspection, different customer requirements can be met.



Technical Specifications

Description	Automatic Headlight Tester
Model	VHE-8000
Image processing	CMOS Camera
Camera resolution	8 million pixels
Measuring lamp	Halogen, LED, HID
Measuring range	Low beam, High beam
Light intensity	0-120,000 cd
Measurement range UP	2°
Measurement range DOWN	2°
Measurement range LEFT	2°
Measurement range RIGHT	2°
Power supply	AC 80-240V / 50-60Hz, DC 12V3A(Internal batteries)
Communication	RS232 Serial
Inspection distance	1 M ± 2%
Display	LCD colour display (10.2")
Dimensions	Main unit: 450(W) x 350(D) x 320(H) mm
Weight	30kg

Technical specifications are subject to changes without notice.



Made in Korea

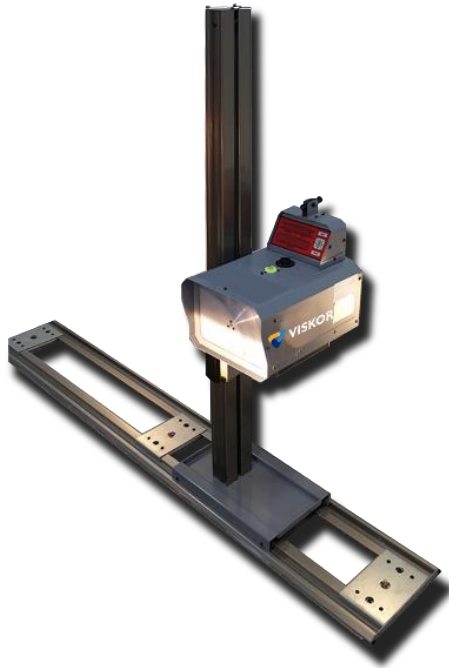
VISKOR CO., LTD.

Address: #617, 1142, BEOMAN-RO, GEUMCHEON-GU, SEOUL, 08595, KOREA

T. +82 2 6959 0634 F. +82 2 6959 0635 E-mail: viskor@viskorea.com www.viskorea.com

Digital Headlight Tester

VHE-2000



Product Features

VISKOR offers remarkable value with our traditional high quality construction and ability to test modern headlamps(Halogen, HID, LED).

These features are standard and allow for quick and reliable headlamp testing.

Easy to install and use even in a small space with a measurement distance of 1M. It can output the measured data of the inspection vehicle, so it can be used as a customer service dimension. Data of the measured value of the inspection vehicle can be transmitted by connecting to a computer. The test vehicle's measurement data memory function makes it easy to use. It is convenient to use because the measured value is indicated as DIGITAL instead of the analog type. It is quick and easy to operate and adjust up and down. When not in use, it goes into standby mode, and after a while, the power is automatically turned off.

- Measurement both Low beam and High beam
- Internal print
- Quick adjustment
- 1m measurement distance
- Internal recharge battery

Technical Specifications

Description	Digital Headlight Tester
Model	VHE-2000
Measuring method	Screen reflection
Measuring range	Low beam, High beam
Light intensity	0-120,000 cd
Measurement range up	0-350 mm/ 10m (0-2°)
Measurement range down	0-350 mm/ 10m (0-2°)
Measurement range left	0-350 mm/ 10m (0-2°)
Measurement range right	0-350 mm/ 10m (0-2°)
Measurement height	40 - 1,000 mm
Measurement distance	1 m
Battery	DC 6V 2A (Internal battery)
Power	AC 80-240V, 50/60Hz,
Display	FND (L/R 4digit, U/D 4digit, BR 8digit)
Dimensions	350 x 360 x 1,600 mm
Dimensions (Rail)	2,700 x 300 x 20 mm
Weight	Main body: 26kg / Rail: 11kg
Option	Built-in thermal printer

Technical specifications are subject to changes without notice.



Made in Korea

VISKOR CO., LTD.

Address: #617, 1142, BEOMAN-RO, GEUMCHEON-GU, SEOUL, 08595, KOREA

T. +82 2 6959 0634 F. +82 2 6959 0635 E-mail: viskor@viskorea.com www.viskorea.com

Analogue Headlight Tester

VH-100



Product Features

A headlight tester is a means to check both the orientation and intensity of a vehicle headlamp to ensure that it meets a minimum standard for the country of use of the vehicle.

VISKOR VH-100 is suitable for motorcycles, passenger cars, vans, trucks and buses.

- Precision manual measurement
- Intuitive analog gages
- Robust mechanical structure for a long life time
- Operation by photodiode

Technical Specifications

Description	Analogue Headlight Tester
Model	VH-100
Measuring method	Screen reflection
Measuring range	High beam
Light intensity	0-80,000 cd
Measurement range up	0-350 mm/ 10m (0-2°)
Measurement range down	0-350 mm/ 10m (0-2°)
Measurement range left	0-350 mm/ 10m (0-2°)
Measurement range right	0-350 mm/ 10m (0-2°)
Measurement height	40 - 1,000 mm
Measurement distance	3 m
Detect sensor	Photosensor
Dimensions	640 x 700 x 1,530 mm
Weight	45kg
Option	Rail

Technical specifications are subject to changes without notice.



Made in Korea

VISKOR CO., LTD.

Address: #617, 1142, BEOMAN-RO, GEUMCHEON-GU, SEOUL, 08595, KOREA

T. +82 2 6959 0634 F. +82 2 6959 0635 E-mail: viskor@viskorea.com www.viskorea.com